

BREAK THROUGH

removing barriers so people can meet Jesus

THIS BOOK BELONGS TO:



CONTENTS

- 05 A NOTE FROM MARK
- 07 WHERE WE’VE COME FROM
- 11 WHERE WE ARE TODAY
- 19 WHERE GOD IS LEADING
- 23 OUR GOALS
 - 26 Vision Initiatives
 - 28 Giving Discipleship Journey
- 31 OUR COMMITMENT
- 37 WHAT’S NEXT
- 40 BREAKTHROUGH SERIES NOTES
- 48 21-Day Prayer Guide

A NOTE FROM MARK

Since 1878, God has been writing a beautiful story at The Glade Church. Lives changed by the gospel. Marriages restored. Students called into ministry. Families anchored in truth. Neighbors baptized. Leaders raised up. Through seasons of challenge and seasons of growth, the Lord has been faithful to us again and again.



And now, we find ourselves at another defining moment.

Growth is a gift, but growth also brings pressure. Parking fills quickly. Traffic backs up. Next generation spaces are stretching beyond capacity. First impressions no longer

reflect the strength and beauty of what God is doing inside. These are good problems, but they are still problems.

That’s why we are stepping into a new season we’re calling BREAKTHROUGH — Removing barriers so people can meet Jesus.

This initiative isn't about buildings for the sake of buildings. It's about people. It's about clearing obstacles so more men, women, students, and children can encounter Christ, grow in discipleship, and be sent out on mission. Breakthrough focuses on three strategic priorities: creating safer access and better parking through a neighboring property, renewing our campus exterior

so hospitality begins before a word is spoken, and expanding student environments to nurture discipleship for the next generation.

But before we talk about projects or commitments, we'll do what Scripture teaches us to do first: remember. This spring, we'll walk through a four-week series in 1 Chronicles built around four movements: Remembrance, Gratitude, Vision, and Joyful Generosity. Alongside this series, we'll enter into 21 Days of Prayer — because before we raise funds or move dirt, we seek the Lord.

This initiative must be Spirit-empowered, Word-centric, and prayerfully dependent. If the Lord does not build the house, we labor in vain. But when He leads, we follow with bold faith.

In 1 Chronicles 29, David prays, "Everything comes from You, and we have given You only what comes from Your own hand." That is the heart behind this moment.

My prayer is that as you read this booklet, you won't feel pressure — you'll feel invitation. An invitation to pray, to trust, to participate, and to prepare the way for those not yet here. This is about the next generation. This is about the next family that drives onto this campus. This is about removing barriers so people can meet Jesus.

The Lord has been faithful to us. Now we step forward together.

07

**WHERE
WE'VE
COME
FROM**

1878

Originally established as Gladeville Baptist Church, the congregation first gathered in a small log building east of Gladeville, a site now within Cedars of Lebanon State Forest.



1880

Secured the deed for its current property, a forward-looking step of faith that rooted the congregation where it still stands today.



1900

Over the following decades, the church grew steadily in spiritual depth and structure, adding prayer services, training, Vacation Bible School, full-time ministry, and an educational wing.



1980

Grown to around 500 members, known for its strong relationships, Southern hospitality, and faithful community-centered presence.



1990

Experienced a season of renewed spiritual vitality and growth, building a new sanctuary as the surrounding region developed around them.



2004

Formalized its vision, mission, and purpose, shifting toward intentional discipleship as a growing community church.



2008

Made a strategic shift from program-driven to purpose-driven ministry, experiencing rapid growth in membership and giving that led to a new Worship Center.

2010

Shifted its culture from inward to outward, embracing radical discipleship and becoming an intentionally missional church.

2012

Strategically prepared for multiplication, expanding its influence locally and beyond through faith-filled planning.

2020

Stepping into a season of multiplication, expanding gospel influence and reaching new people in new places.

BIG PICTURE

From a log cabin in the woods to a multiplying, missional church, The Glade has faithfully moved through seasons of foundation, growth, awakening, and alignment, with one fire remaining through it all: to serve the Lord and do His will. Every generation before us made a courageous, faith-filled decision, and now it's our turn.

**WHERE
WE ARE
TODAY**

111

Where We Are Today

God has brought us a long way in His service. Before we take the next step in faith, it's good to reflect on what we're currently doing together.

**HERE IS A SNAPSHOT OF
THE GLADE CHURCH IN
2025...**



181

New Members



17

Mission Partners



1,281

Average Weekend Attendance

97

Baptisms



225

Weekly Volunteers

\$93k

in monetary/other donations to help those in need



**These numbers
reflect how we
help people
treasure Christ
and courageously
make Him known.**

**WHERE
GOD IS
LEADING**

19

Get Ready to Breakthrough

ALMOST 150 YEARS AGO,

a small group of believers stepped out in faith, gathered, prayed, gave, and built, trusting that what God was doing among them was bigger than themselves. And The Glade Church was born.

Through every season since, God has been faithful. He has led us, refined us, and used us to lead people to treasure Christ and courageously make Him known. What began as a simple act of obedience has become a multi-generational story of grace.

And now, we sense Him leading us again.

Breakthrough is about removing barriers so people can meet Jesus. As we've prayed and evaluated our space, it has become clear that we are at a defining moment. Our campus is filling up. Parking is tight. Student and kids environments are stretched. Key ministry spaces are limited. Even the front of our campus needs a thoughtful refresh to better reflect who we are and create a clearer, more welcoming first impression. We refuse to let space limitations, inside or out, become mission limitations.

By God's provision, our first step is underway as we have entered a purchase agreement for the property next door. This strategic opportunity expands our footprint and positions us to plan wisely for the future, not just for the next year, but for the next generation.

Now we are preparing for targeted improvements that will strengthen how we disciple and deploy people: expanded traffic and parking flow, enhanced student environments, a refreshed and more inviting campus frontage, and strategic updates that increase usability and flexibility.

These are not cosmetic changes. They are ministry multipliers. Every square foot represents people: students, children, families, and neighbors who need hope.

Breakthrough is about movement, from limitation to opportunity, from congestion to capacity, from maintenance to mission. It will require faith, unity, and generosity from all of us.

The same God who was faithful in the beginning is faithful now.

Let's move forward together. Let's trust Him for Breakthrough.



**OUR
GOALS**

23

Our Goals

Primary Goal: 100% Engagement

What will God do in us?

Breakthrough begins in the heart before it ever shows up on a campus. Our goal isn't equal giving but equal sacrifice and full participation. We're asking every person and family at The Glade to prayerfully engage in this two-year journey, because this is about discipleship before dollars and stewardship before structures. When every member treasures Christ, grows together, and gives generously, breakthrough happens long before construction begins.

Secondary Goal: \$3.5 Million Over the Next 2 Years

What will God do through us?

We are trusting God to provide \$3.5 million over the next two years so we can remove practical barriers that currently limit gospel reach.

MOVE FORWARD

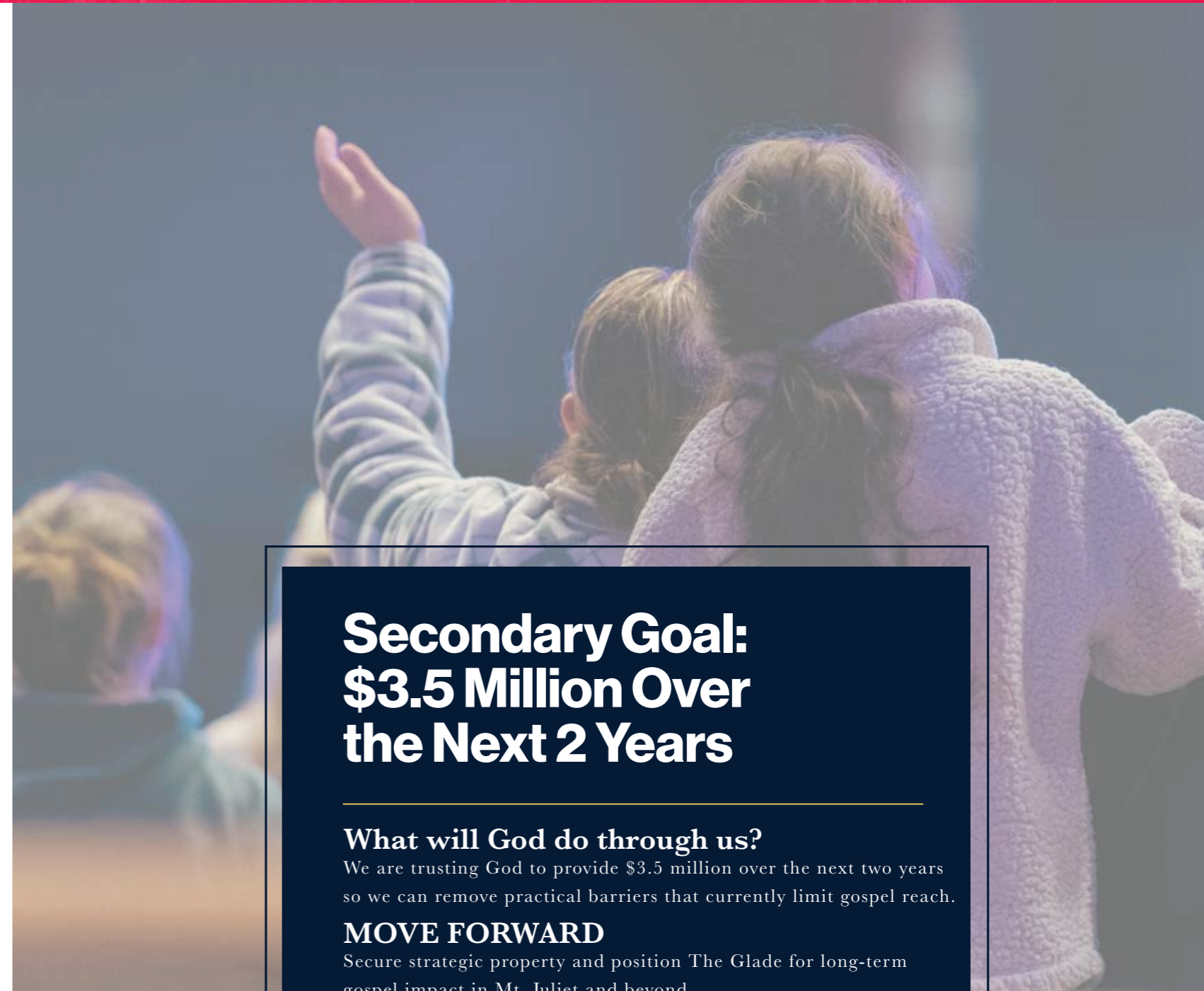
Secure strategic property and position The Glade for long-term gospel impact in Mt. Juliet and beyond.

MOVE CLOSER

Improve and expand ministry environments, traffic, parking, student spaces, gathering areas, and operational support, so more people can be discipled effectively.

MOVE OUTWARD

Strengthen evangelism, leadership development, and next-generation ministry so we multiply the Word for years to come.



Vision Initiatives

Join us on this journey as we breakthrough together and live out our faith through the following initiatives:



TRAFFIC & FLOW BREAKTHROUGH

Purchasing the neighboring property to create safer access, better parking distribution, and room for future ministry expansion. Clear access ensures more people can gather to hear the gospel.

FIRST-IMPRESSION BREAKTHROUGH

Renewing our campus exterior so hospitality begins at the four-way stop and in the parking lot. An updated face reflects the life inside and points people to the hope of Christ before a word is spoken.



NEXT GENERATION BREAKTHROUGH

Renewing and expanding student environments to relieve overcrowding and create intentional spaces that nurture discipleship and leadership development for the next generation.



GIVING DISCIPLESHIP JOURNEY

At The Glade, generosity isn't a fundraising strategy — it's a discipleship pathway. We don't give because the church needs something from us; we give because Jesus has given everything for us. The Giving Discipleship Journey is a simple framework to help every member take a next step in living open-handed before the Lord.

INITIAL GIVER

An Initial Giver is someone just beginning the habit of generosity, whether giving for the first time, occasionally, or spontaneously. It's the moment someone says, "God, I recognize everything I have comes from You." The next step is to move from occasional giving to intentional, rhythmic giving.

CONSISTENT GIVER

A Consistent Giver prioritizes regular, planned generosity, giving systematically and budgeting for it as an act of worship rather than an afterthought. Just as we grow through consistent time in Scripture and prayer, we grow through consistent generosity. The next step is asking, "Is God calling me to grow in percentage or priority?"

PRIORITY GIVER

A Priority Giver has moved from giving what's comfortable to giving what reflects trust, ordering their budget around kingdom priorities and giving first rather than last. Giving becomes an expression of allegiance: "Christ is my King. His mission matters most." At this stage, generosity is no longer about convenience but conviction, and it aligns deeply with our call to impact the world and give generously as every member. The next step is asking, "What would surrender look like?"

SURRENDERED GIVER

A Surrendered Giver recognizes that 100% belongs to God, seeing themselves as a steward rather than an owner. This person is open to radical obedience and gives sacrificially when God leads. Generosity at this stage is no longer just financial — it's holistic, encompassing time, talent, influence, resources, and opportunities. This is where the heart is fully aligned with the gospel: "Freely you received; freely give." Giving flows from deep gratitude for Christ's finished work. The next step is to lift your eyes beyond today.

ETERNAL GIVER

An Eternal Giver lives with eternity in view, giving strategically for long-term kingdom impact and thinking in generations rather than moments. They understand that buildings fade and markets fluctuate, but souls are eternal. Eternal Givers help remove barriers so people can meet Jesus — not just now, but for decades to come — stewarding their resources with the conviction that what we give today shapes what God does tomorrow. This is the heartbeat of Breakthrough.

Why This Matters

The goal is not equal gifts but equal surrender. Every member has a next step — no one is pressured, but everyone is invited. As we grow together, our generosity reflects what we truly treasure and positions The Glade Church to amplify gospel impact, accelerate discipleship, activate leadership growth, and advance the next season of ministry.

**OUR
COMMITMENT**

31



What is the Breakthrough Initiative?

The Breakthrough Funding Initiative is a two-year generosity journey from April 2026 to April 2028, where every gift goes toward one unified vision: removing barriers so people can meet Jesus. This isn't "above and beyond" giving to multiple things — it's one mission, one vision, one commitment. Every dollar given to Breakthrough fuels ongoing ministry, campus improvements, expanded space for the next generation, and future gospel impact in Mt. Juliet and beyond. This is about positioning The Glade Church for the next season of disciples made, leaders raised up, families strengthened, and the gospel multiplying. We move forward not out of pressure but out of promise, not out of fear but out of faith.

A TWO-YEAR BREAKTHROUGH COMMITMENT

We believe generosity begins with surrender. Before we ask, "What should I give?" we ask, "God, what do You want to do in me?" Take time to pray and ask the Lord how He would have you participate in the Breakthrough Funding Initiative over the next two years.

SAMPLE COMMITMENT CARD

MY/OUR TOTAL TWO-YEAR BREAKTHROUGH COMMITMENT

\$

PLEASE COUNT MY GIFT TODAY TOWARDS MY COMMITMENT

\$

Name

Address

Email Phone

I/We will give: Weekly Monthly One-Time Gift Non-Cash Assets

On May 3rd — Commitment Sunday — we will come together as a church family to make our commitments at the same time, unified in the same mission. There is something powerful about a church family saying yes together. Between now and then, simply seek the Lord, talk with your family, and come ready to take your next step.

WHAT COULD \$3.5M OF GIVING LOOK LIKE?

This is not about equal gifts but equal sacrifice. Some are called to lead with significant gifts, while others are called to step forward in faithful obedience. If 750 families each sought the Lord and responded in faith, the vision becomes reality.

GIFTS NEEDED	TWO-YEAR GIFT LEVEL	ANNUAL GIFT	MONTHLY GIFT	GIFT LEVEL TOTAL
1	\$500,000	\$250,000	\$20,833	\$500,000
1	\$250,000	\$125,000	\$10,417	\$250,000
3	\$100,000	\$50,000	\$4,167	\$300,000
4	\$75,000	\$37,500	\$3,125	\$300,000
4	\$50,000	\$25,000	\$2,083	\$200,000
5	\$40,000	\$20,000	\$1,667	\$200,000
7	\$30,000	\$15,000	\$1,250	\$210,000
10	\$25,000	\$12,500	\$1,042	\$250,000
10	\$20,000	\$10,000	\$833	\$200,000
14	\$15,000	\$7,500	\$625	\$210,000
15	\$12,000	\$6,000	\$500	\$180,000
20	\$10,000	\$5,000	\$417	\$200,000
20	\$8,000	\$4,000	\$333	\$160,000
30	\$5,000	\$2,500	\$208	\$150,000
30	\$2,500	\$1,250	\$104	\$75,000
40	\$1,500	\$750	\$63	\$21,000
50	\$1,000	\$500	\$42	\$50,000
50	\$100	\$50	\$4	\$5,000
Many	Every Gift Matters	—	—	—
TOTAL GIFT GOAL				\$3,500,000

**WHAT'S
NEXT**

37

What can you do next?

Breakthrough isn't just a funding initiative; it's a spiritual journey. Here are four ways every person at The Glade Church can move forward.

Pray Persistently

Breakthrough begins on our knees. Pray that God would remove barriers in our hearts, increase our faith, clarify our obedience, and multiply gospel impact through The Glade.

Celebrate Loudly

We believe God is going to do more than raise funds, He is going to raise faith. As He works in you during this season, share with those around you how He is moving. Breakthrough is about His glory.

Engage Fully

Be present, lean in, and stay connected throughout this season. Attend each week of the 4-Week Breakthrough Sermon Series, participate in your group discussions, engage with the weekly devotional content, and join a Vision Night gathering. This isn't about information... it's about transformation.

Give Generously

Ask God to show you what obedience looks like over the next two years, and take whatever bold steps of faith are required to see it through. Every gift given to the Breakthrough Funding Initiative from April 2026 to April 2028 goes toward one unified mission: removing barriers so people can meet Jesus.

IMPORTANT DATES

21-Day Prayer Focus

April 13, 2026 - May 3, 2026

Breakthrough Sermon Series

April 12, 2026 - May 3, 2026

Vision Meetings

March 22, 2026

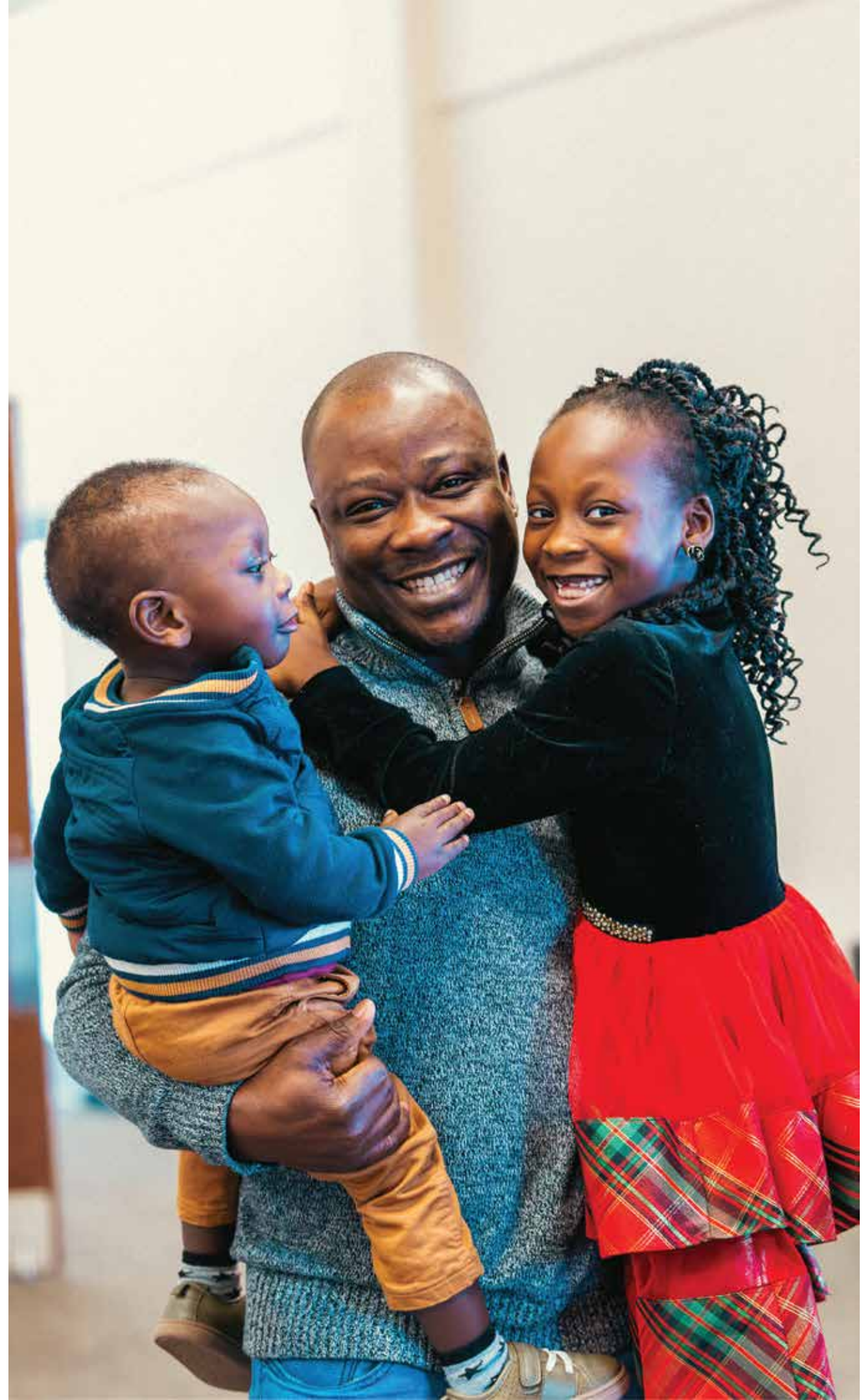
March 26, 2026

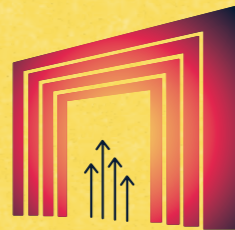
April 7, 2026

Commitment Sunday

Sunday, May 3

at all Glade Church weekend services





WEEK 1

Remember

April 13-19, 2026

“GOD, REMIND US WHO WE ARE AND WHAT YOU’VE DONE.”

DAY 1: REMEMBER HIS FAITHFULNESS

Read

1 Chronicles 16:8–12

Context

David calls God’s people to remember His mighty works before moving forward.

Reflect

Where have you clearly seen God’s faithfulness in your life or in The Glade Church?

Pray

Lord, anchor our future in remembrance of Your faithfulness.

DAY 2: GOD IS THE BUILDER

Read

Psalm 127:1

Context

Solomon reminds us that human effort is empty unless the Lord builds the house.

Reflect

Where might you be relying on strategy more than surrender?

Pray

Father, build what only You can build.

DAY 3: OUR IDENTITY AS HIS PEOPLE

Read

1 Peter 1:9-10

Context

Peter reminds believers that our identity comes before our activity.

Reflect

Are you living from your identity in Christ or striving to earn it?

Pray

Lord, root us in who we are before what we do.

DAY 4: TESTIMONIES MATTER

Read

Psalm 78:4

Context

God commands His people to tell the next generation what He has done.

Reflect

What story of God's work should you be sharing?

Pray

God, let us boldly tell of Your works

DAY 5: WORSHIP BEFORE WORK

Read

1 Chronicles 16:29

Context

Worship always precedes the work of God's people.

Reflect

Has worship shaped your heart in this season, or has busyness?

Pray

Lord, let worship lead every decision we make.

DAY 6: UNITY IN GRATITUDE

Read

Colossians 3:15-17

Context

Paul reminds believers that gratitude protects unity in the church.

Reflect

Is there any place division or frustration is stealing gratitude in your heart?

Pray

Lord, guard our unity and anchor us in thankfulness.

DAY 7: PERSONAL REFLECTION

Read

Lamentations 3:22-23

Context

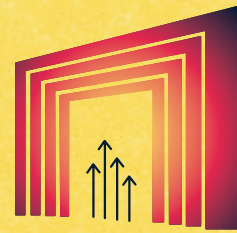
In the middle of hardship, Jeremiah remembers that God's mercies are new every morning.

Reflect

Where do you need to remember that God's mercy is fresh today?

Pray

Father, thank You that Your mercy meets me every morning.



WEEK 2

Give Thanks

April 20-26, 2026

“GOD, SHAPE OUR HEARTS BEFORE YOU SHAPE OUR PLANS.”

DAY 8: GRACE COMES FIRST

Read

1 Chronicles 17:1–10

Context

David wants to build for God, but God reminds him that grace came first.

Reflect

Where are you tempted to “repay” God instead of respond to Him?

Pray

Lord, let gratitude, not guilt, move my heart.

DAY 9: COVENANT PROMISE

Read

2 Samuel 7:22

Context

David praises God for His unmatched greatness and faithful promises.

Reflect

Do you trust that God’s promises are secure even when outcomes are unknown?

Pray

Father, steady my heart in Your unbreakable promises.

DAY 10: HUMILITY BEFORE THE LORD

Read

1 Chronicles 17:16

Context

David responds to God's grace with humility: "Who am I, Lord?"

Reflect

Has familiarity with God's blessings dulled your humility?

Pray

Lord, keep my heart humble before You.

DAY 11: EVERYTHING COMES FROM YOU

Read

James 1:17

Context

Every good and perfect gift originates with God.

Reflect

What blessing in your life have you subtly begun to treat as self-earned?

Pray

Father, remind me that everything comes from You.

DAY 12: CHEERFUL GIVING

Read

2 Corinthians 9:7

Context

God desires cheerful, intentional generosity.

Reflect

How can you determine what to give and do it with a cheerful heart?

Pray

Lord, fill my heart with joy as I make a giving decision.

DAY 13: TRUSTING HIS PROVISION

Read

Philippians 4:19

Context

Paul assures believers that God supplies every need according to His riches.

Reflect

Is there a fear about provision you need to surrender?

Pray

Father, I trust You to provide what is needed.

DAY 14: OPEN HANDS

Read

Matthew 6:21

Context

Jesus teaches that our hearts follow what we treasure.

Reflect

What currently holds your heart most tightly?

Pray

Lord, align my treasure with Your kingdom.



WEEK 3

Prepare & Rejoice

April 27 - May 3, 2026

“GOD, HELP US PREPARE THE WAY FOR GENERATIONS.”

DAY 15: GENERATIONAL VISION

Read

1 Chronicles 22:5

Context

David prepares for a future he will not personally see completed.

Reflect

What kind of spiritual legacy do you want to leave?

Pray

Lord, help us build for generations.

DAY 16: COURAGE TO MOVE

Read

1 Chronicles 28:20

Context

David tells Solomon to be strong and act because God is with him.

Reflect

Where might God be calling you to courageous obedience?

Pray

Father, give me courage to step forward.

DAY 17: LEADERS LEAD FIRST**Read**

1 Chronicles 29:1–5

Context

David leads by example before asking others to respond.

Reflect

In what area of your life is God asking you to lead first?

Pray

Lord, help me respond before I ask others to.

DAY 18: WILLING HEARTS**Read**

1 Chronicles 29:6–9

Context

The people give willingly, and joy spreads through the community.

Reflect

Are you willing to respond in generosity?

Pray

Father, give us joyful and willing hearts.

DAY 19: UNITY IN RESPONSE**Read**

Ephesians 4:3

Context

Paul calls believers to actively protect the unity that the Spirit has already created.

Reflect

Is there any relationship or attitude that could threaten unity in this season?

Pray

Lord, guard our unity and protect our hearts from division.

DAY 20: WORSHIP THROUGH GENEROSITY**Read**

1 Chronicles 29:10–14

Context

After the people give willingly, David responds with worship, acknowledging that everything already belongs to God.

Reflect

Do you see generosity as loss — or as worship?

Pray

Father, remind us that everything we have comes from You and can be returned to you in worship.

DAY 21: JOYFUL CELEBRATION**Read**

1 Chronicles 29:17–18

Context

David rejoices because the people give freely and wholeheartedly before the Lord.

Reflect

What would it look like for your obedience to be marked by joy?

Pray

Lord, let our response be wholehearted and joyful.



“Now to him who is able to do above and beyond all that we ask or think according to the power that works in us — to him be glory in the church and in Christ Jesus to all generations, forever and ever. Amen.”

EPHESIANS 3:20-21



THE GLADE CHURCH